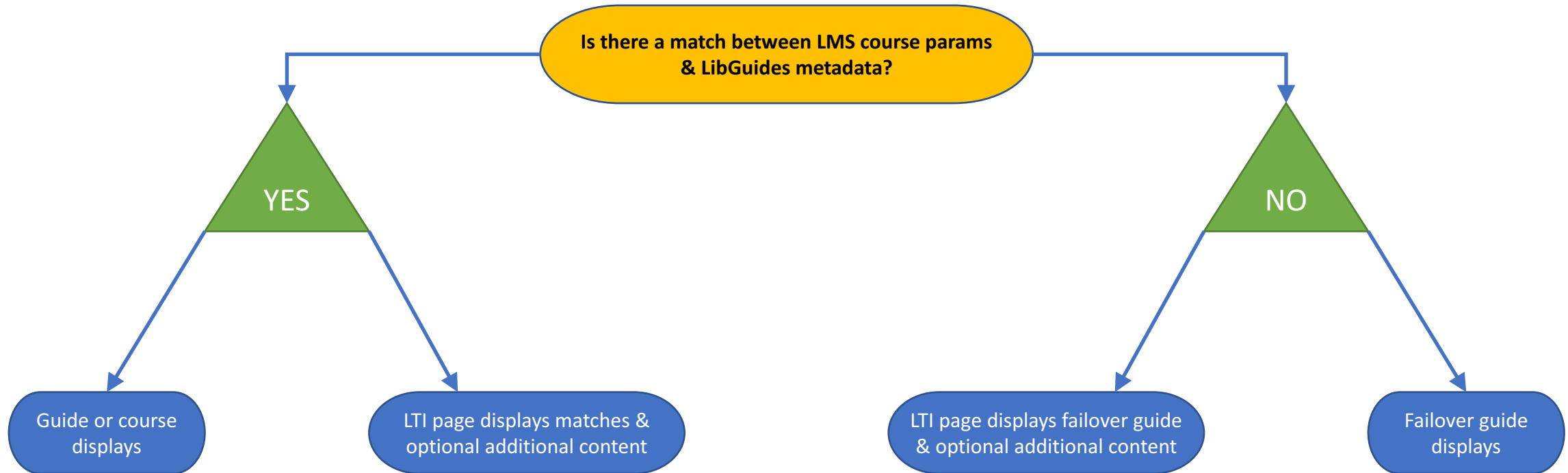
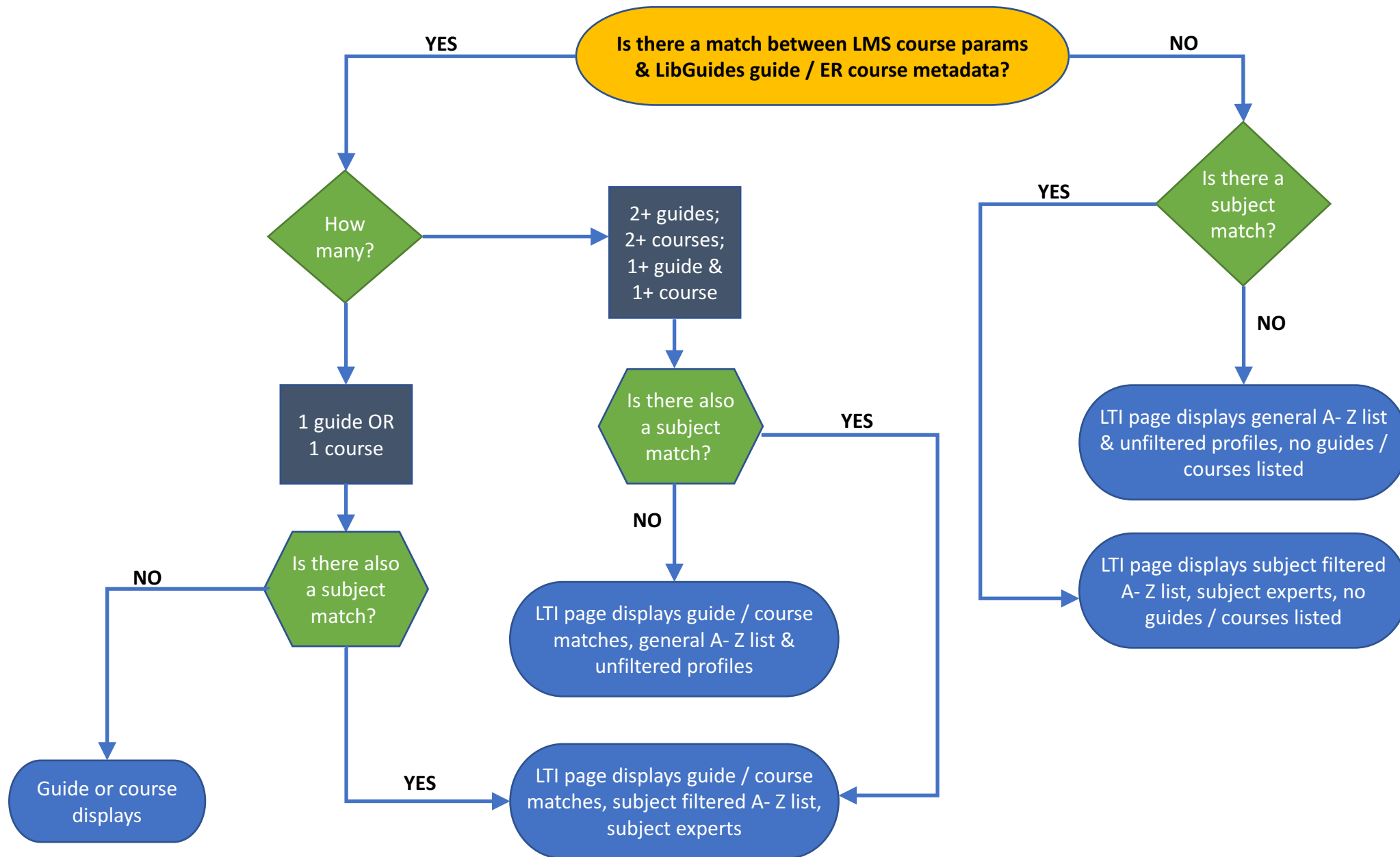


LTI Automagic Matching Behavior



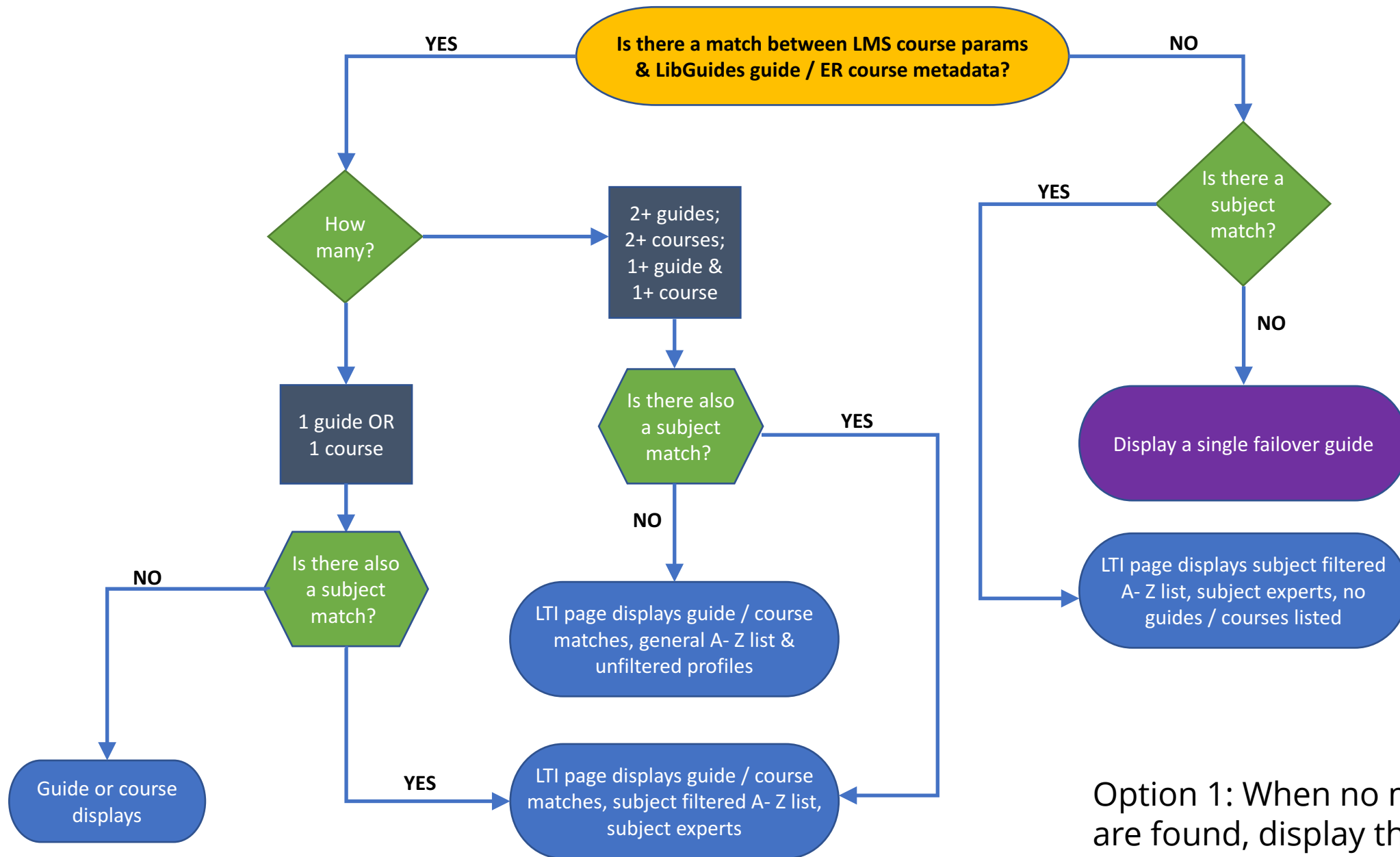
How it works - High level



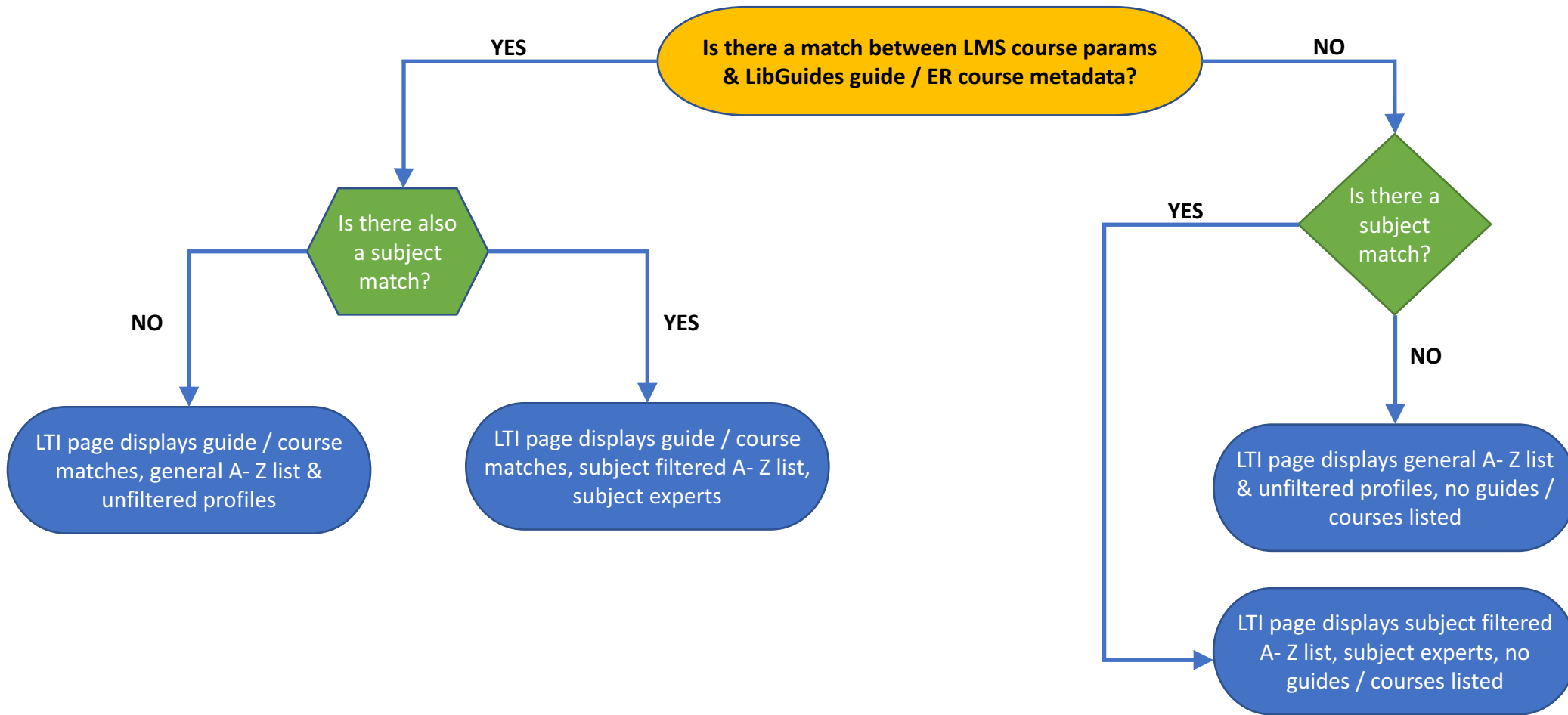


Options!

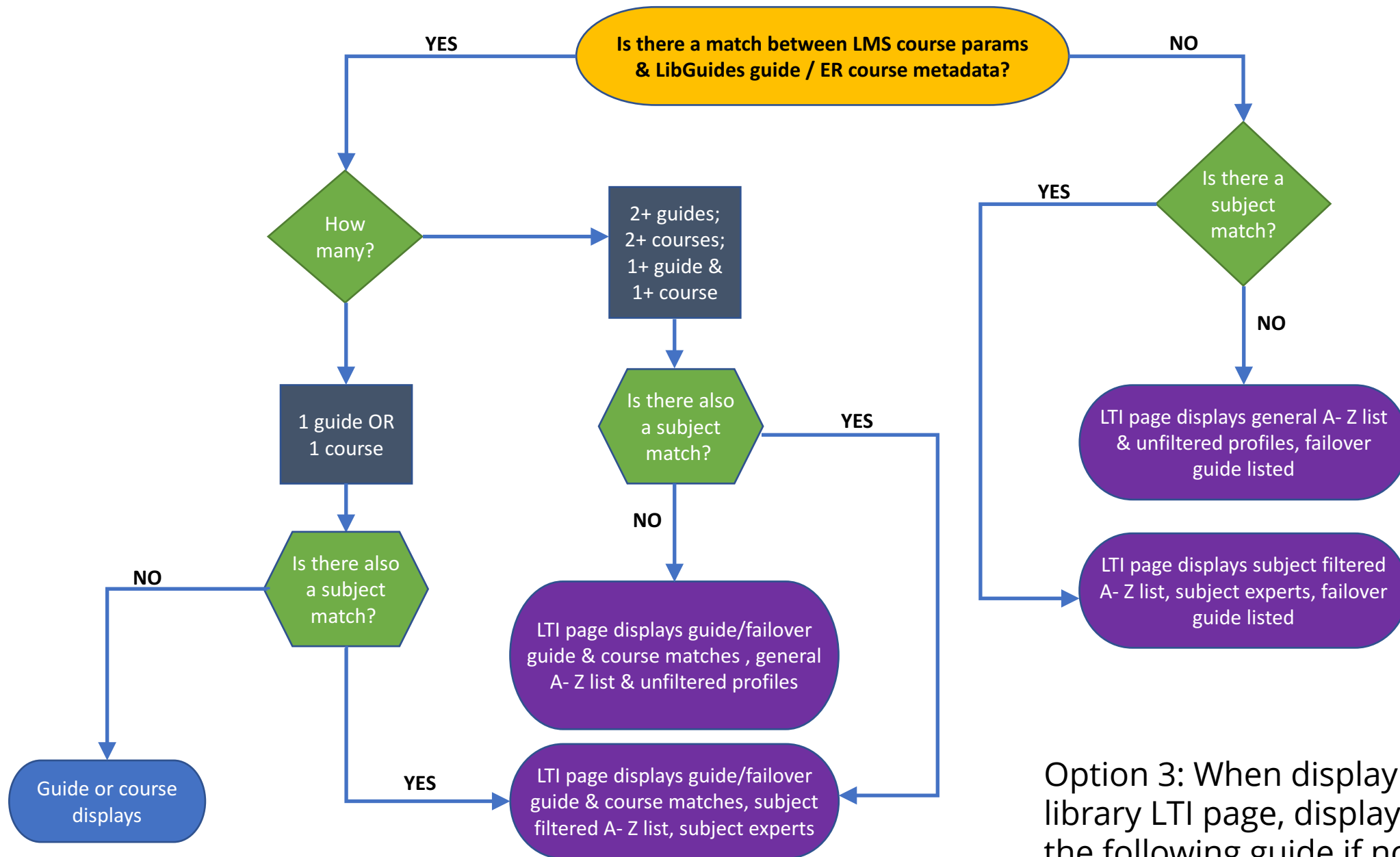
- Option 1: When no matches are found, display the following guide:
[select guide]
 - Option 2: Display the library LTI page when a single matching guide / course is found.
 - Option 3: When displaying the library LTI page, display a link to the following guide if no matching guides are found:
[select guide]
- [OPTION 1](#)
 - [OPTION 2](#)
 - [OPTION 3](#)
 - [OPTIONS 1 & 2](#)
 - [OPTIONS 1 & 3](#)
 - [OPTIONS 2 & 3](#)
 - [OPTIONS 1, 2, & 3](#)



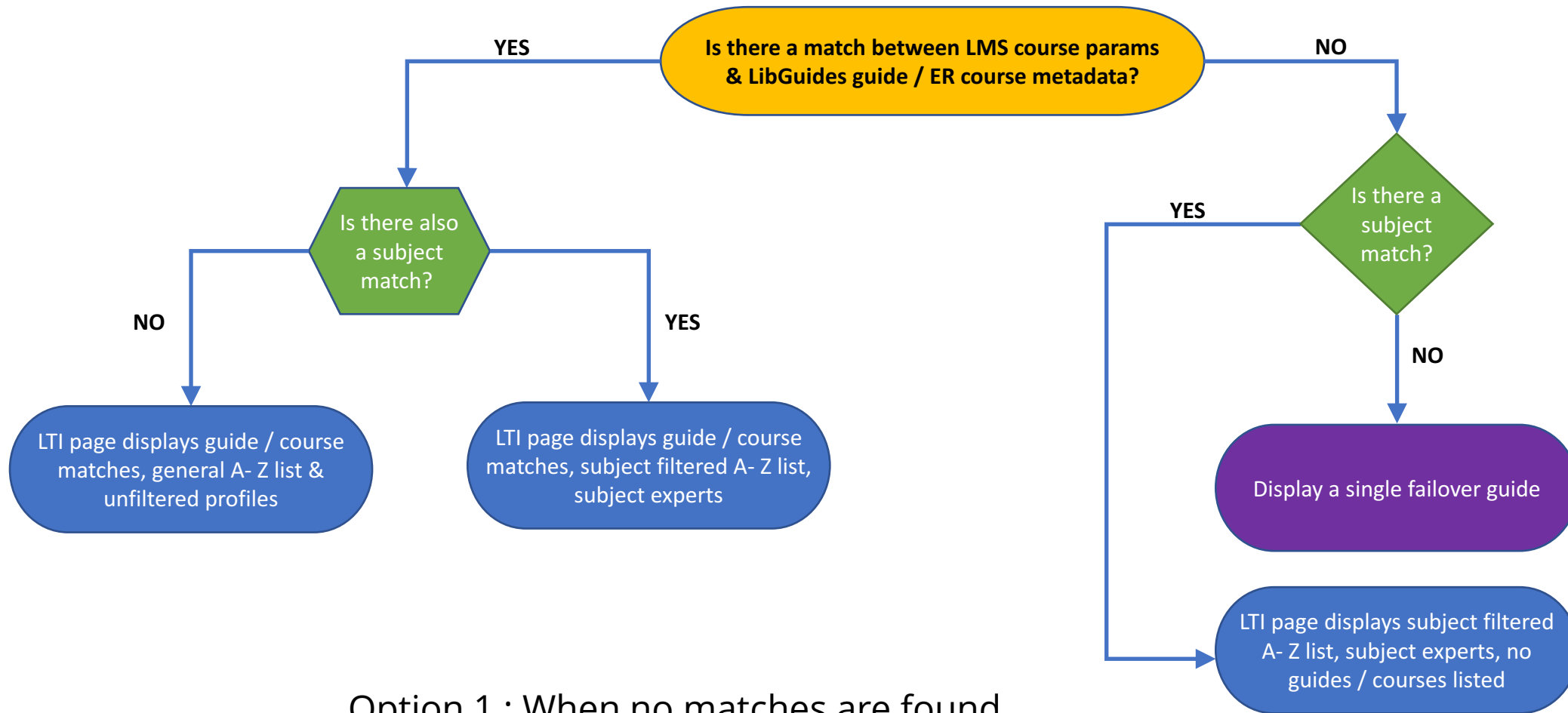
Option 1: When no matches are found, display the following guide: [select guide]



Option 2: Display the library LTI page when a single matching guide / course is found.

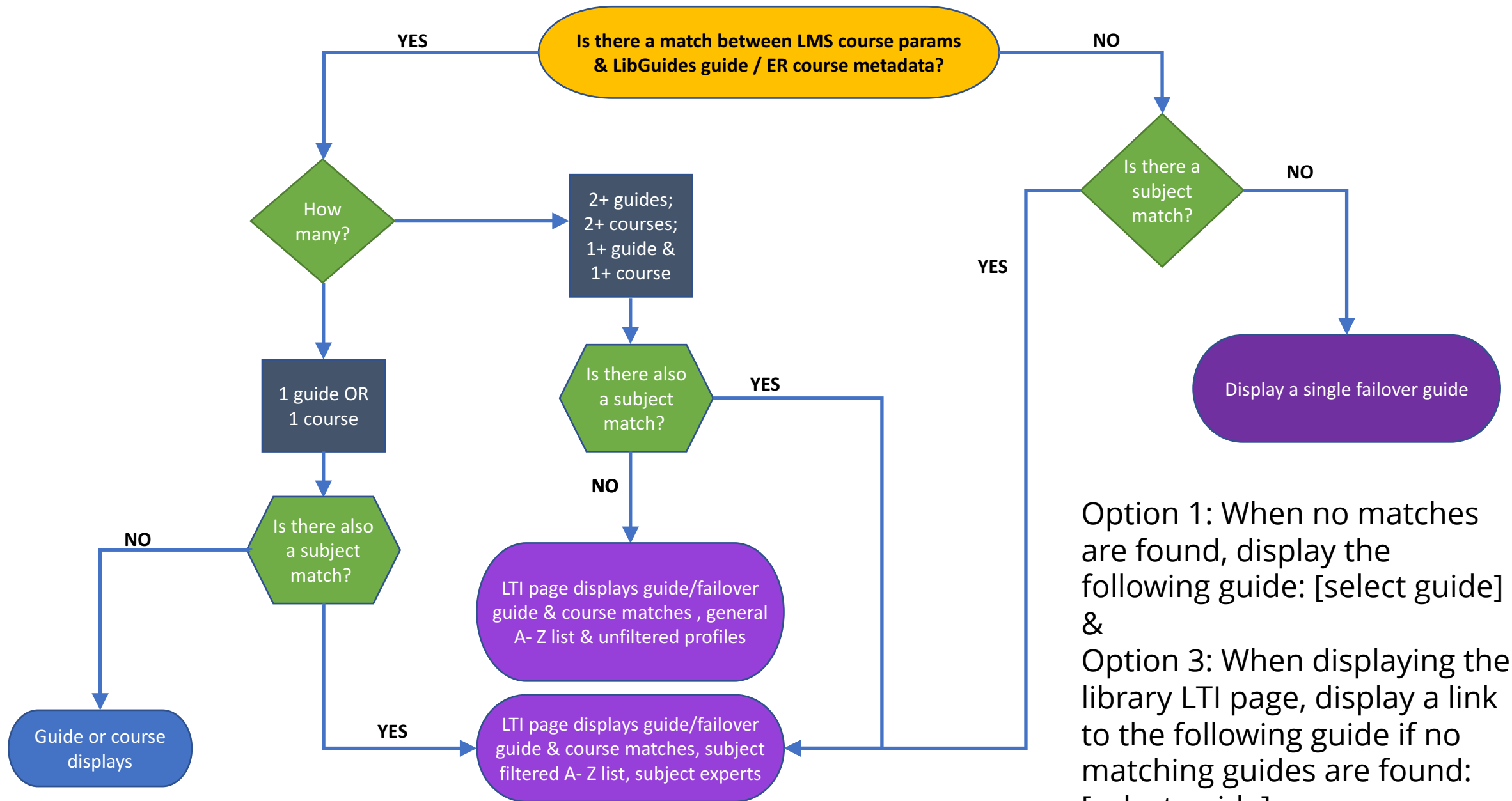


Option 3: When displaying the library LTI page, display a link to the following guide if no matching guides are found: [select guide]

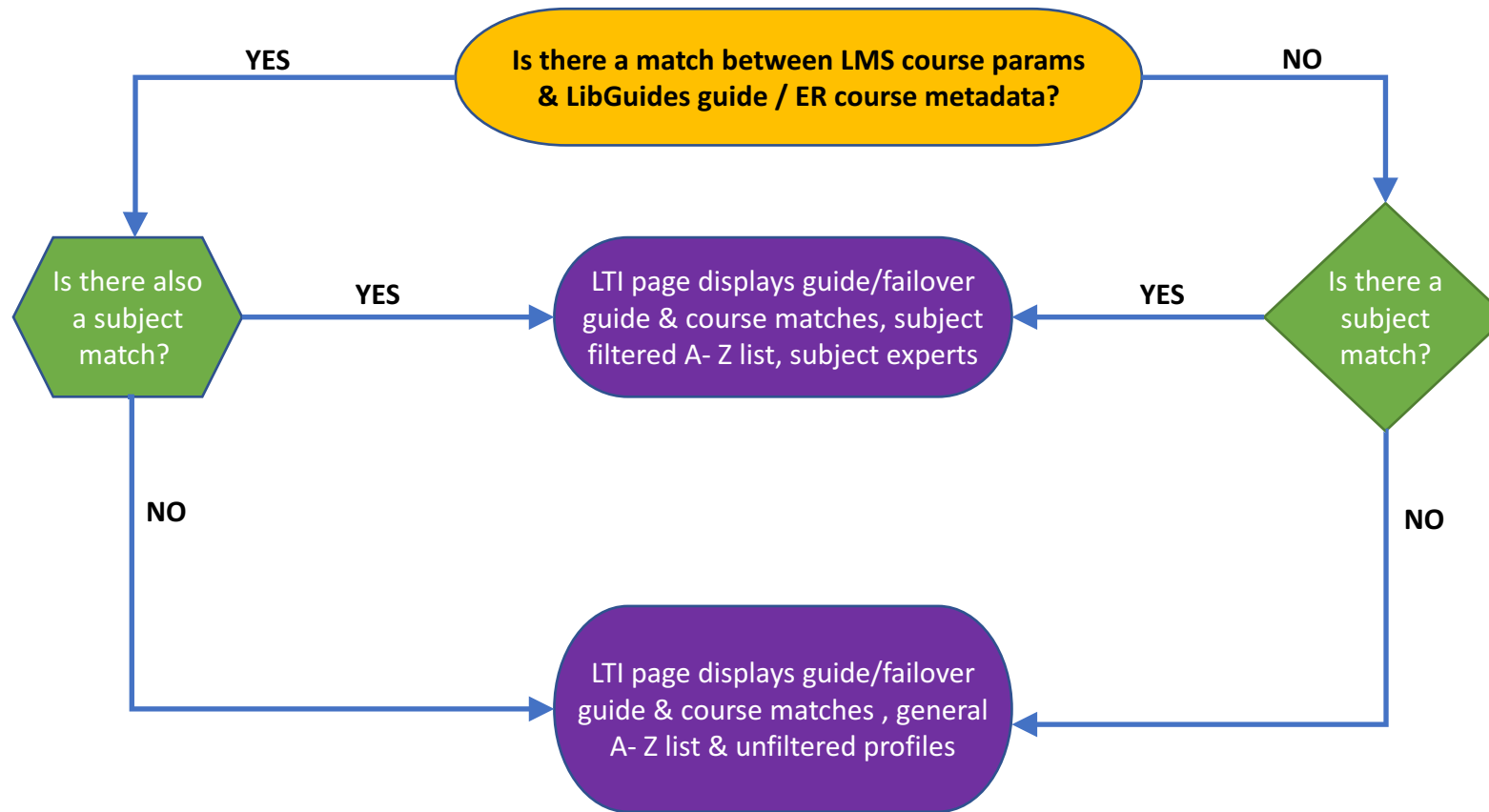


Option 1 : When no matches are found,
display the following guide: [select guide]
&

Option 2: Display the library LTI page when a
single matching guide / course is found.



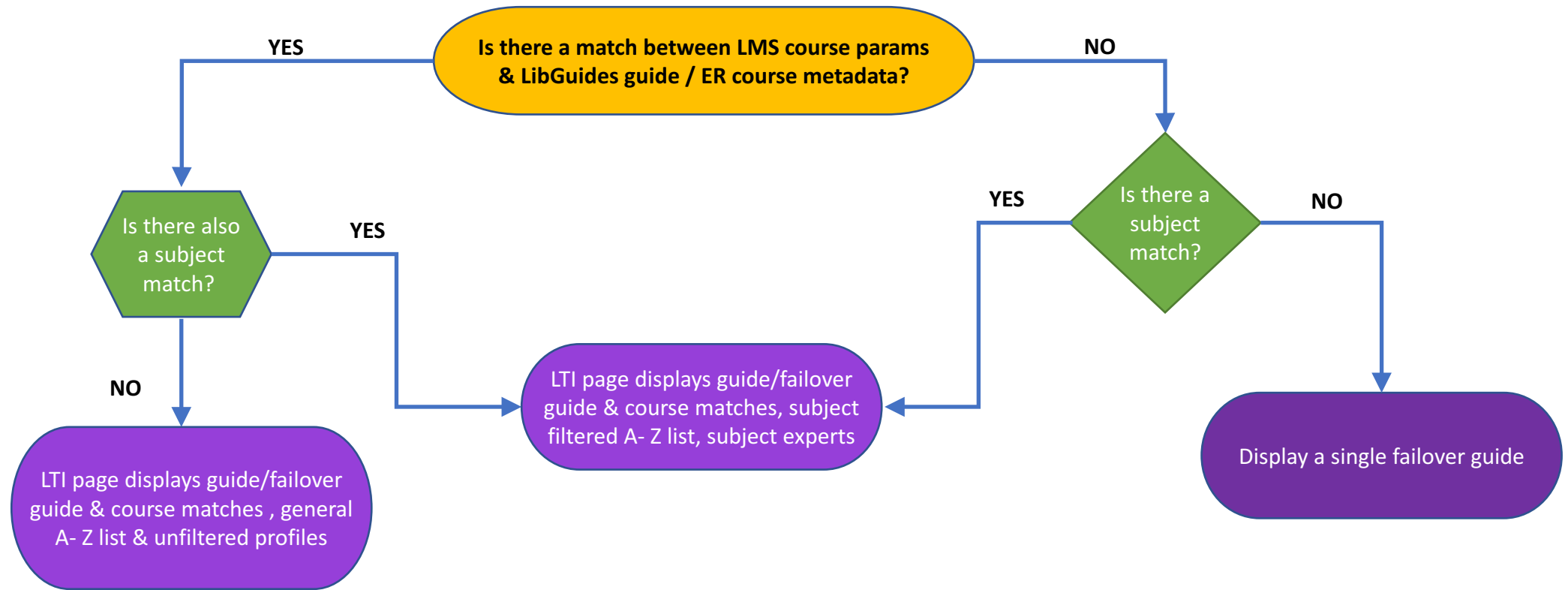
Option 1: When no matches are found, display the following guide: [select guide] &
Option 3: When displaying the library LTI page, display a link to the following guide if no matching guides are found: [select guide]



Option 2: Display the library LTI page when a single matching guide / course is found.

&

Option 3: When displaying the library LTI page, display a link to the following guide if no matching guides are found: [select guide]



Option 1: When no matches are found, display the following guide: [select guide]
&

Option 2: Display the library LTI page when a single matching guide / course is found.

&

Option 3: When displaying the library LTI page, display a link to the following guide if no matching guides are found: [select guide]